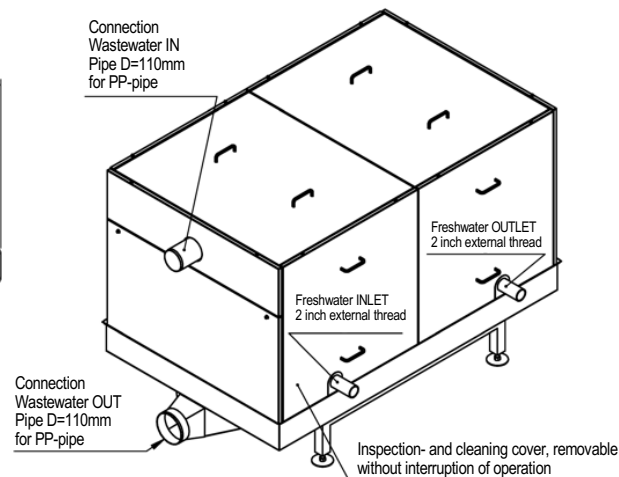
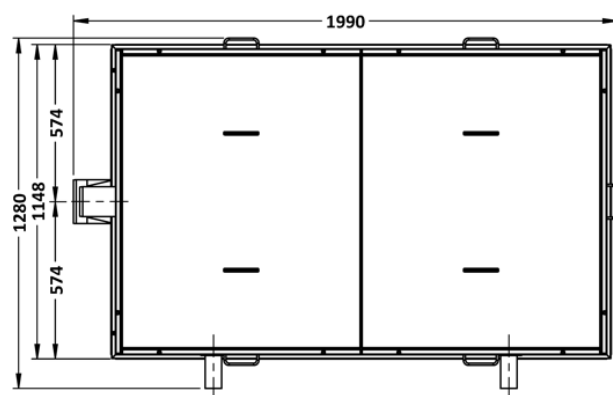
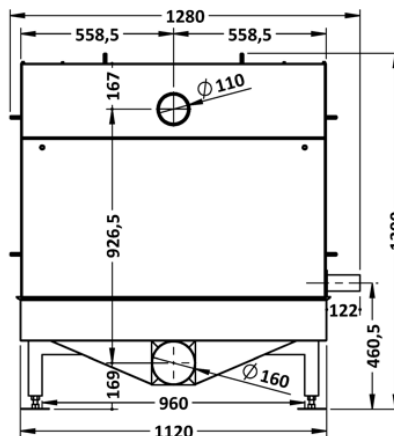
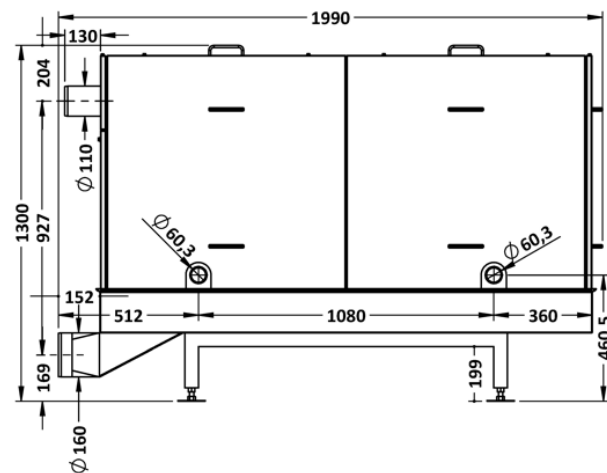


# FERCHER Wastewater-Heatexchanger Type **FB-4/S-1-1** - Datasheet

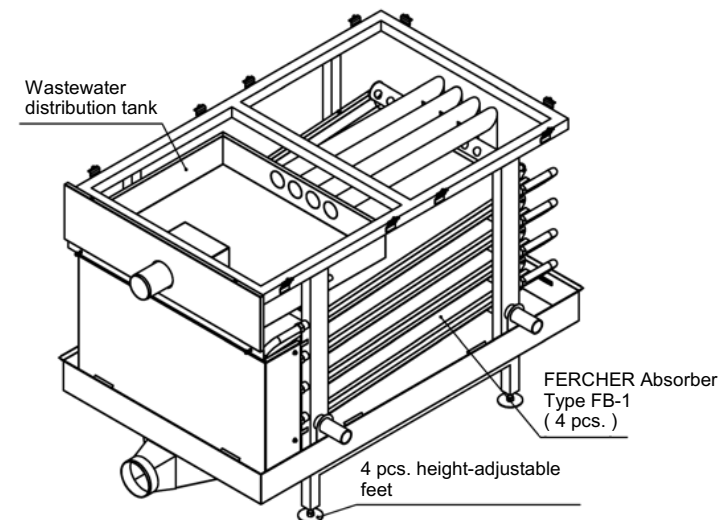


General	
Model-name / Type:	FB-4/S-1-1
Material:	AISI 316L
External Dimensions	
Length:	1 990 mm
Width:	1 280 mm
Height:	1 300 mm
Weights	
Empty weight:	428 kg

Wastewater	
Maximum-Flowrate:	8,0 L/s
Max. allowed temperature:	100 °C
Wastewater-Inlet:	pipe D=110
Wastewater-Outlet:	pipe D=110
Freshwater	
Maximum-Flowrate:	5,6 L/s
Max. allowed pressure:	6 bar
Water-Inlet:	2 inch external thread
Water-Outlet:	2 inch external thread

**Cleaning:** Wastewater-side of heatexchanger can be cleaned during full operation, just take off panels and clean (for instance with pressure-cleaner and/or brush)

View: Covers removed



## FERCHER Wastewater-Heatexchanger Type **FB-4/S-1-1** - Characteristics

Curves are valid for operation with freshwater-IN-temperature of 15°C

For special/individual calculations please contact us at [office@fercher.at](mailto:office@fercher.at). We gladly help you with choosing the correct heatexchanger and with calculations.

