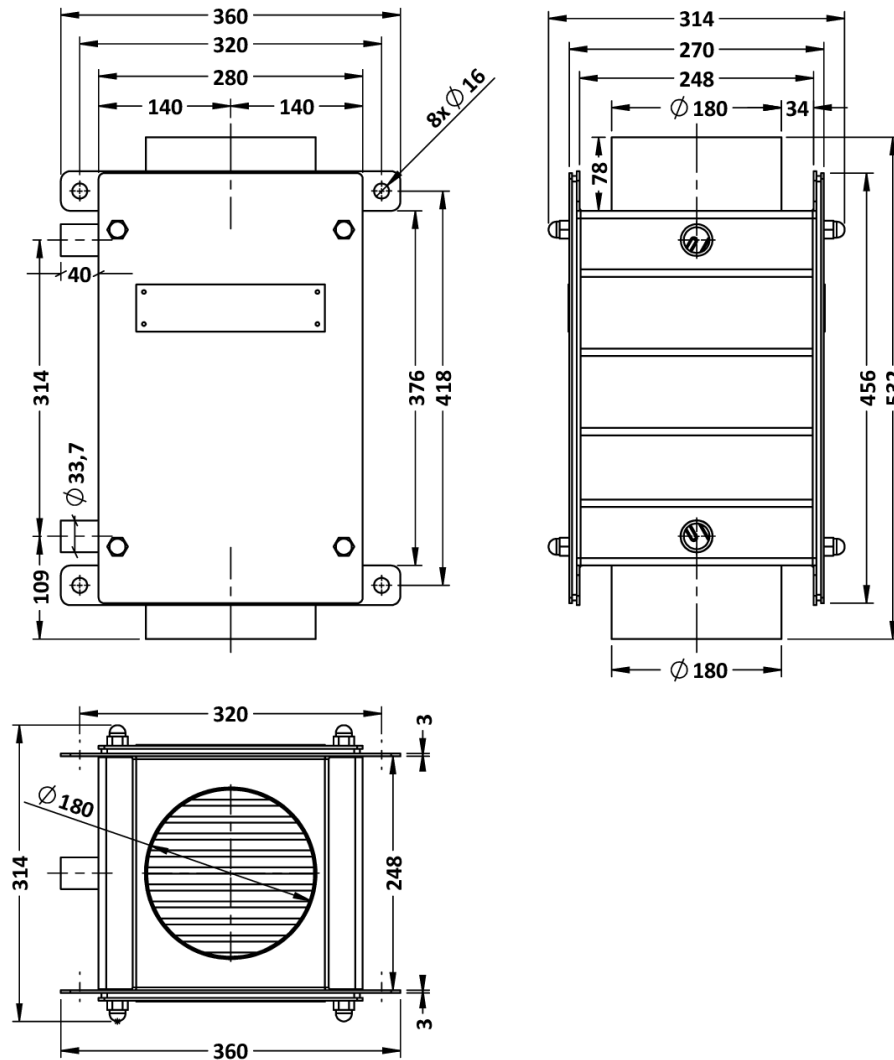


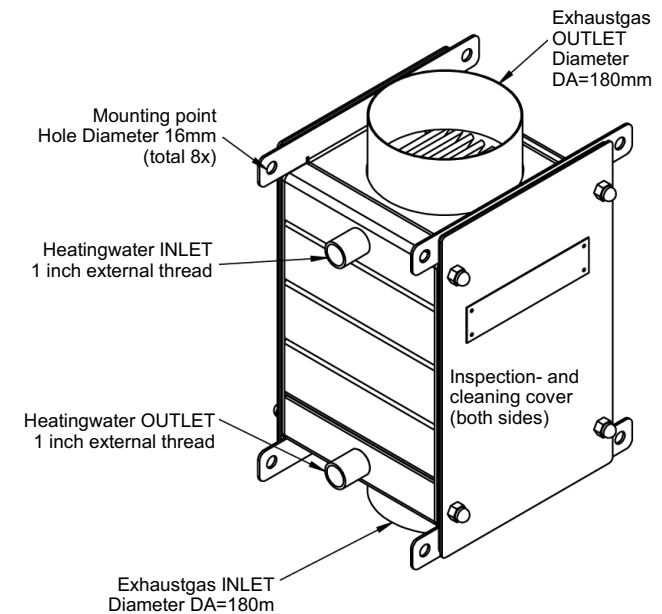
FERCHER flue gas heatexchanger type **FW-100** - Datasheet



General		Flue gas	
Model-name / Type:	FW-100	Maximum-Flowrate:	1 500 m³/h
Construction-Type:	Fully welded	Max. allowed temperature:	500 °C
Material:	AISI 316Ti AISI 316L	Max. allowed pressure:	3 000 Pa (30 mBar)
External Dimensions		Flue gas-Inlet:	pipe D=180
Length:	360 mm	Flue gas-Outlet:	pipe D=180
Width:	314 mm	Heating-Water	
Height:	532 mm	Nominal-Flowrate:	0,5 L/s
Weights		Max. allowed temperature:	110,0 °C
Empty weight:	43 kg	Max. allowed pressure:	6 bar
Internal-Volume:	8 L	Heating-Water inlet (DIN2633):	1 inch external thread
Operating-Weight:	51 kg	Heating-Water outlet (DIN2633):	1 inch external thread

Cleaning: Manual cleaning (for instance with brush/pressure-cleaner/steam) is possible without disassembling the heatexchanger, just take off the panels (exhaust-gas flow must be off).

Exhaustgas-Connections: available exhaustgas-pipe-dimensions: 200 mm, 180mm, 150 mm, 125 mm



FERCHER flue gas heatexchanger type **FW-100** - Characteristic curves

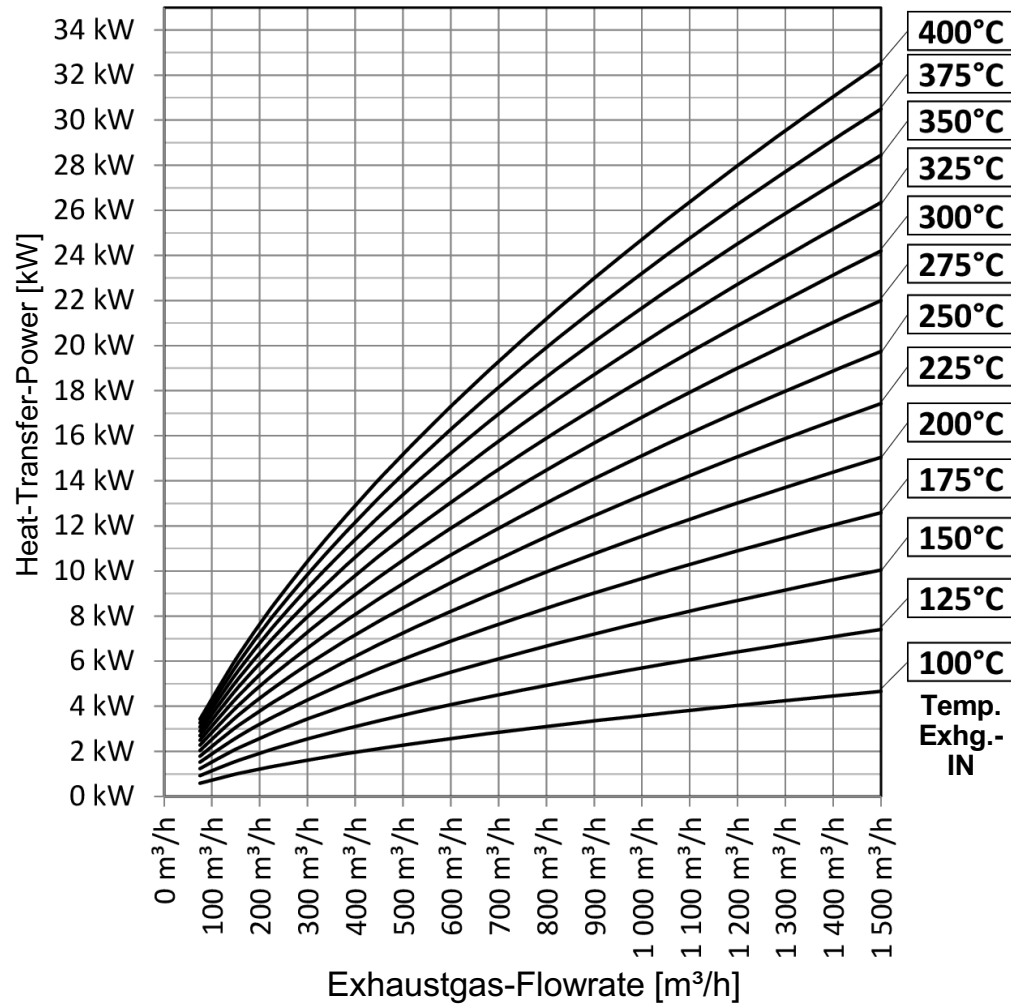
Following characteristics are valid for the following operation (Exhaustgas from Gas/Oil-Burner), Heatingwater-Temperature-IN: 60 °C, Volume-Flow: 0,5 L/s (=1,8 m³/h)

Heatingwater pressuredrop at 0,5 L/s Volume-Flow: 0,1 bar

Exhaust-gas flowrates are real volume flow rates, reference temperature is exhaust-gas IN temperature

For special/individual calculations please contact us at office@fercher.at. We gladly help you with choosing the correct heatexchanger and with calculations.

Performance curves



Flue gas pressuredrop [Pa]

