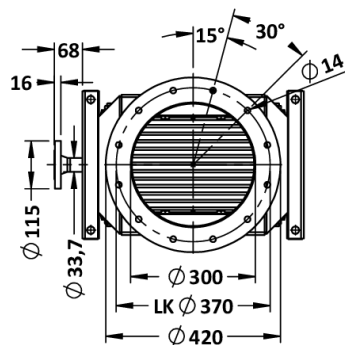
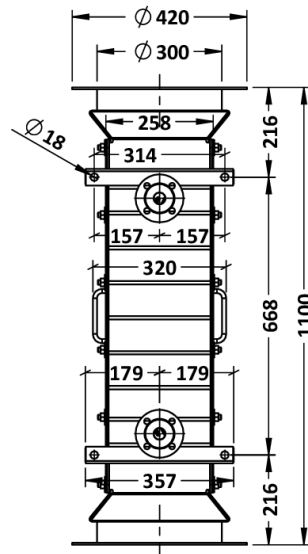
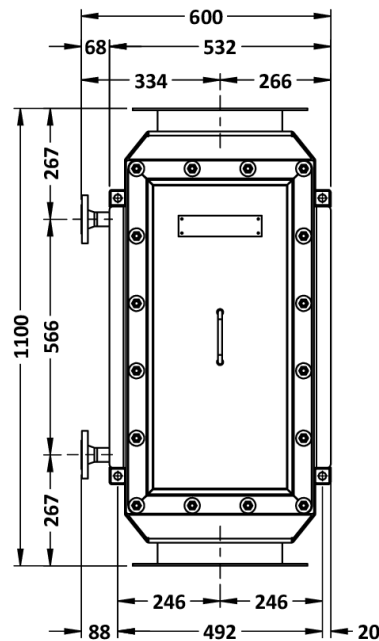
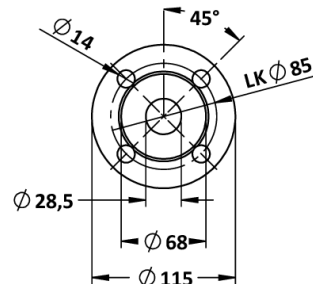


FERCHER flue gas heatexchanger type **FW-200** - Datasheet



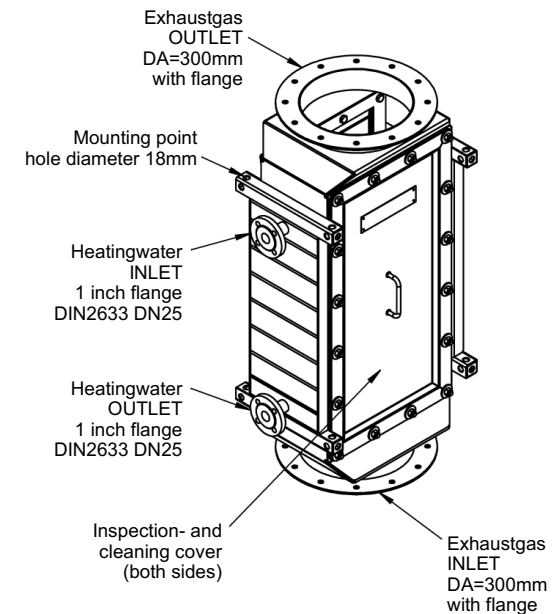
**Detail: 1 Zoll Flansch
(DIN2633 DN25)**



General		Flue gas	
Model-name / Type:	FW-200	Maximum-Flowrate:	2 500 m³/h
Construction-Type:	Fully welded	Max. allowed temperature:	500 °C
Material:	AISI 316Ti AISI 316L	Max. allowed pressure:	3 000 Pa (30 mBar)
External Dimensions		Flue gas-Inlet:	flange DN300
Length:	600 mm	Flue gas-Outlet:	flange DN300
Width:	420 mm	Heating-Water	
Height:	1 100 mm	Nominal-Flowrate:	0,5 L/s
Weights		Max. allowed temperature:	110,0 °C
Empty weight:	146 kg	Max. allowed pressure:	6 bar
Internal-Volume:	18 L	Heating-Water inlet (DIN2633):	1 inch flange
Operating-Weight:	164 kg	Heating-Water outlet (DIN2633):	1 inch flange

Cleaning: Manual cleaning (for instance with brush/pressure-cleaner/steam) is possible without disassembling the heatexchanger, just take off the panels (exhaust-gas flow must be off).

Exhaustgas-Connections: Included: 2 pcs. loose counter-flanges (for exhaustgas-connection) and 2 pcs. exhaustgas-flange-gaskets. Above mentioned weights include the weight for these counter-flanges and gaskets.





FERCHER flue gas heatexchanger type **FW-200** - Characteristic curves

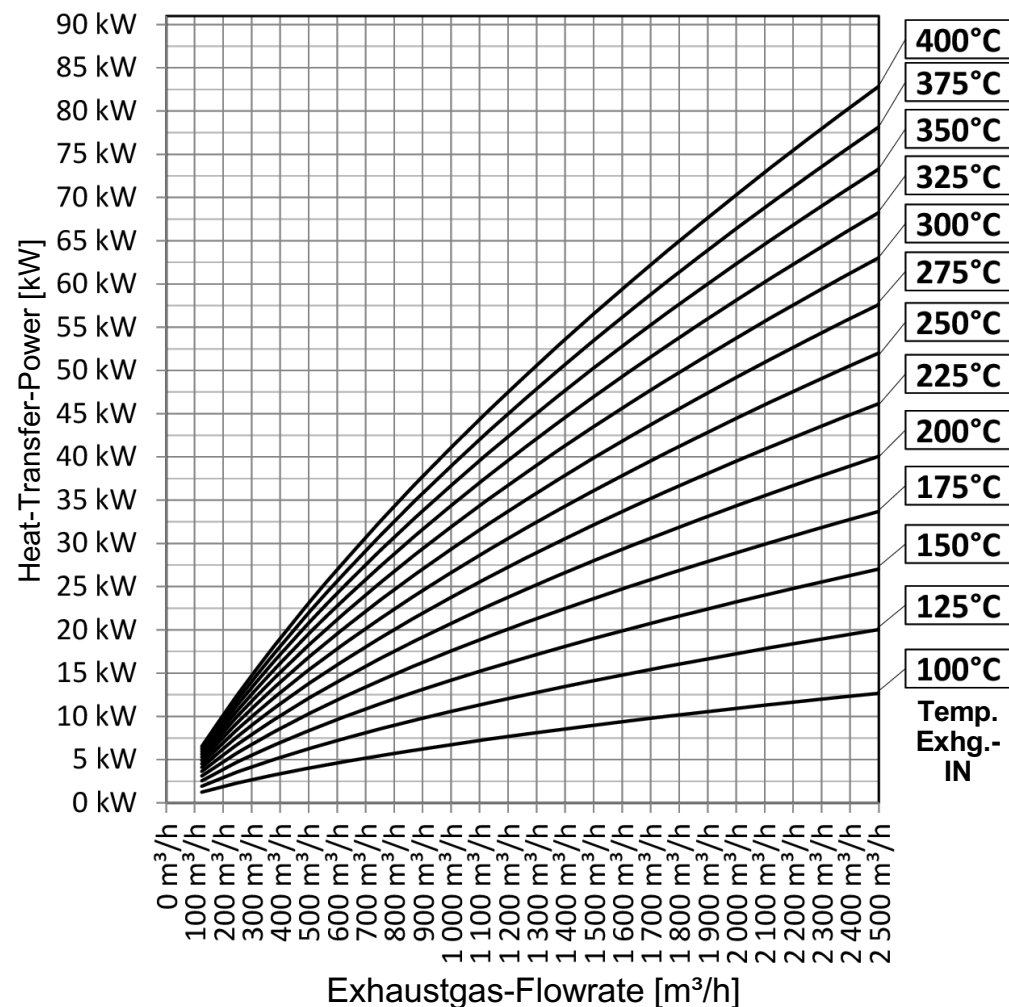
Following characteristics are valid for the following operation (Exhaustgas from Gas/Oil-Burner), Heatingwater-Temperature-IN: 60 °C, Volume-Flow: 0,5 L/s (=1,8 m³/h)

Heatingwater pressuredrop at 0,5 L/s Volume-Flow: 0,1 bar

Exhaust-gas flowrates are real volume flow rates, reference temperature is exhaust-gas IN temperature

For special/individual calculations please contact us at office@fercher.at. We gladly help you with choosing the correct heatexchanger and with calculations.

Performance curves



Flue gas pressuredrop [Pa]

