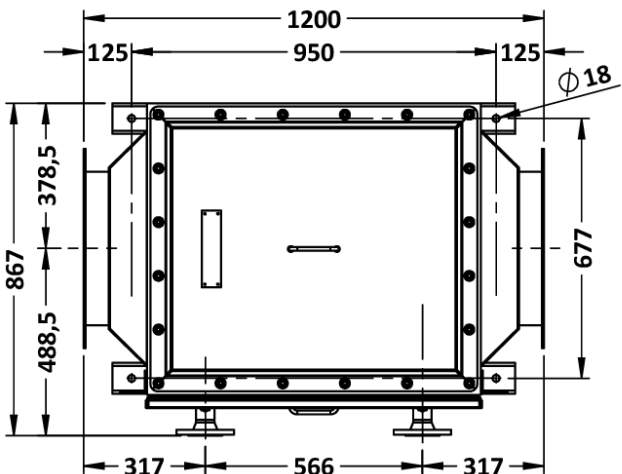
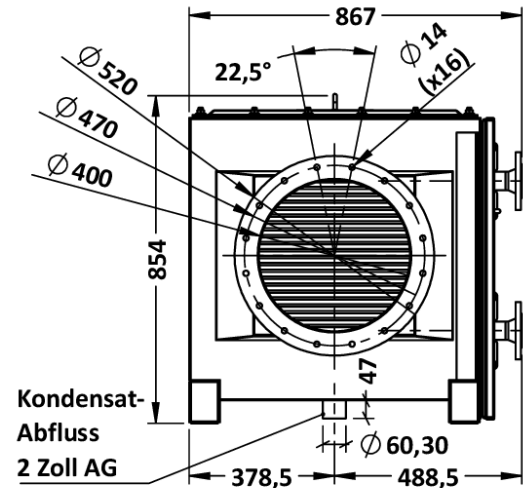
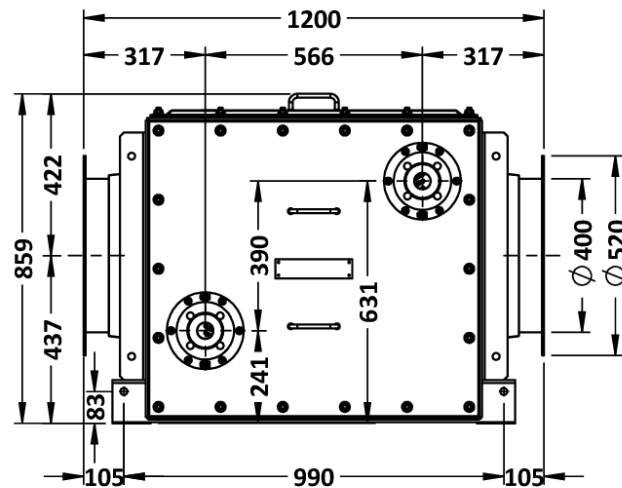
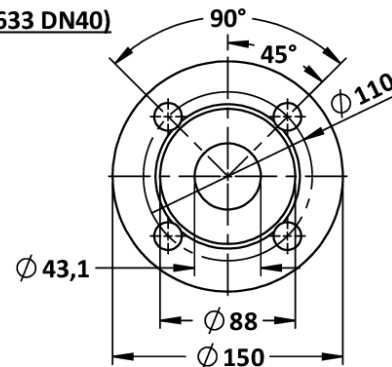


FERCHER flue gas heatexchanger type **FW-600-H-A** - Datasheet



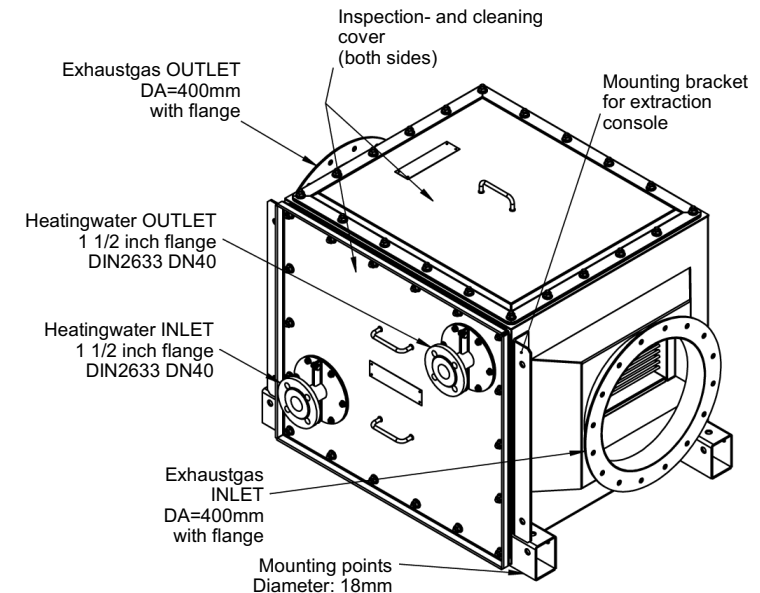
Detail: 1 1/2 Zoll Flansch (DIN2633 DN40)



General		Flue gas	
Model-name / Type:	FW-600-H-A	Maximum-Flowrate:	7 000 m³/h
Construction-Type:	Fully welded	Max. allowed temperature:	500 °C
Material:	AISI 316Ti AISI 316L	Max. allowed pressure:	3 000 Pa (30 mBar)
External Dimensions		Flue gas-Inlet:	flange DN400
Length:	1 200 mm	Flue gas-Outlet:	flange DN400
Width:	867 mm	Heating-Water	
Height:	859 mm	Nominal-Flowrate:	1,5 L/s
Weights		Max. allowed temperature:	110,0 °C
Empty weight:	392 kg	Max. allowed pressure:	6 bar
Internal-Volume:	42 L	Heating-Water inlet (DIN2633):	1 1/2 inch flange
Operating-Weight:	434 kg	Heating-Water outlet (DIN2633):	1 1/2 inch flange

Removeable Heatexchanger-Modules: All heatexchanger-modules can be extracted with the use of the FERCHER extraction-console. Afterwards the heatexchanger module can be cleaned or lifted away. The extraction-console is not part of the heatexchanger and will be offered seperately.

Exhaustgas-Connections: Included: 2 pcs. loose counter-flanges (for exhaustgas-connection) and 2 pcs. exhaustgas-flange-gaskets. Above mentioned weights include the weight for these counter-flanges and gaskets.





FERCHER flue gas heatexchanger type FW-600-H-A - Characteristic curves

Following characteristics are valid for the following operation (Exhaustgas from Gas/Oil-Burner) , Heatingwater-Temperature-IN: 60 °C, Volume-Flow: 1,5 L/s (=5,4 m³/h)

Heatingwater pressuredrop at 1,5 L/s Volume-Flow: 0,1 bar

Exhaust-gas flowrates are real volume flow rates, reference temperature is exhaust-gas IN temperature

For special/individual calculations please contact us at office@fercher.at. We gladly help you with choosing the correct heatexchanger and with calculations.

